



Report 327
March 2018

Evaluating India's climate targets: the implications of economy-wide and sector specific policies

Arun Singh, Niven Winchester and Valerie J. Karplus

MIT Joint Program on the Science and Policy of Global Change combines cutting-edge scientific research with independent policy analysis to provide a solid foundation for the public and private decisions needed to mitigate and adapt to unavoidable global environmental changes. Being data-driven, the Joint Program uses extensive Earth system and economic data and models to produce quantitative analysis and predictions of the risks of climate change and the challenges of limiting human influence on the environment—essential knowledge for the international dialogue toward a global response to climate change.

To this end, the Joint Program brings together an interdisciplinary group from two established MIT research centers: the Center for Global Change Science (CGCS) and the Center for Energy and Environmental Policy Research (CEEPR). These two centers—along with collaborators from the Marine Biology Laboratory (MBL) at

Woods Hole and short- and long-term visitors—provide the united vision needed to solve global challenges.

At the heart of much of the program's work lies MIT's Integrated Global System Model. Through this integrated model, the program seeks to discover new interactions among natural and human climate system components; objectively assess uncertainty in economic and climate projections; critically and quantitatively analyze environmental management and policy proposals; understand complex connections among the many forces that will shape our future; and improve methods to model, monitor and verify greenhouse gas emissions and climatic impacts.

This reprint is intended to communicate research results and improve public understanding of global environment and energy challenges, thereby contributing to informed debate about climate change and the economic and social implications of policy alternatives.

—*Ronald G. Prinn and John M. Reilly,*
Joint Program Co-Directors

Evaluating India's climate targets: the implications of economy-wide and sector specific policies

Arun Singh¹, Niven Winchester², Valerie J. Karplus³

Abstract: We employ a numerical economy-wide model of India with energy sector detail to simulate the impact of India's commitments to the Paris Climate Agreement. We simulate targets for reducing CO₂ emissions intensity of GDP via an economy-wide CO₂ price and for increasing non-fossil electricity capacity via a Renewable Portfolio Standard. We find that compared to the no policy scenario in 2030, the average cost per unit of emissions reduced is lowest under a CO₂ pricing regime. Adding an RPS increases the cost by more than ten times. Projected electricity demand in 2030 decreases by 8% under the CO₂ price, while introducing an RPS further suppresses electricity demand. Importantly, a reduction in the costs of wind and solar power induced by favorable policies may result in cost convergence across instruments, paving the way for more aggressive decarbonisation policies in the future.

1. INTRODUCTION	2
2. METHODOLOGY	3
2.1 MODELING FRAMEWORK	3
2.2 DATA SOURCES AND PARAMETRIZATION	6
2.3 SCENARIOS	7
3. RESULTS	8
3.1 SCENARIOS WITH FIXED COSTS OF WIND AND SOLAR POWER.....	8
3.2 THE IMPACT OF ALTERNATIVE WIND AND SOLAR COSTS.....	9
3.2.1 Carbon Price and Welfare Loss under different scenarios and alternative costs of wind power expansion and solar power	10
3.2.2 Impact of alternative wind and solar costs on policy outcomes.....	11
4. CONCLUSION	12
5. REFERENCES	14
APPENDIX A: IMPORTANT ELASTICITY VALUES USED IN THE MODEL	15
APPENDIX B: BOTTOM UP ESTIMATION OF COST SHARES FOR SOLAR POWER (NITI AAYOG, 2015)	16
APPENDIX C: CALCULATION OF EMISSIONS INTENSITY TARGET	16
APPENDIX D: CONVERSION OF NON-FOSSIL ELECTRICITY CAPACITY TARGETS FOR 2030 TO PRODUCTION TARGETS	16

1 Corresponding author. Research Associate, Joint Program on the Science and Policy of Global Change, Massachusetts Institute of Technology, Cambridge, MA 02139, USA. Email: asingh25@mit.edu

2 Principal Research Scientist, Joint Program on the Science and Policy of Global Change, Massachusetts Institute of Technology, Cambridge, MA 02139, USA.

3 Sloan School of Management, Massachusetts Institute of Technology, Cambridge, MA, 02139, USA.

1. Introduction

India stands at a critical juncture in its development path. The country's current rate of economic growth (7%/year), among the fastest in the world, is projected to continue (World Bank, 2017; World Bank, 2016). Over the past three decades, economic growth has contributed to large increases in energy consumption, with the installed electricity capacity alone quadrupling from 70 GW in 1992 to 272 GW in 2015 (CEA, 2015). However, while India accounts for 18% of the world's population, it uses only 6% of the world's primary energy, and nearly 240 million households lacked access to electricity in 2015 (IEA, 2015). Satisfying the unmet energy demand as well as fueling the necessary economic growth implies energy consumption would need to rapidly increase in the coming decades. The electricity sector alone may see a sharp growth, with the installed capacity expected to triple from 329 GW in 2017 to 1075 GW in 2040 (IEA, 2015).

At the same time, India's climate targets submitted in its Nationally Determined Contribution (NDC) to the 21st Conference of Parties in Paris (COP21) promise a reduction in CO₂ emissions intensity of GDP by 33 to 35 percent by 2030 from 2005 levels and an increase in non-fossil based power to about 40% of cumulative installed capacity in 2030 (GoI, 2015).¹ While the non-fossil electricity capacity target is included as an independent component in India's NDC, in practice, it will contribute to reducing the emissions intensity of the GDP. As emissions intensity targets apply to the entire economy while non-fossil electricity targets are sector specific, they require separate instruments for implementation. An economy wide CO₂ price is, theoretically, the least cost instrument to achieve emissions reduction (Coase, 1960; Stavins, 2008; Metcalf & Weisbach, 2009), whereas Renewable Portfolio Standards (RPS) and Feed-in-tariffs are common regulatory instruments used to implement renewable targets. India's climate policy does not include an economy-wide CO₂ price,² but Renewable Purchase Obligations (RPO) – in principle similar to the RPS (in this paper, we use the two interchangeably) – are in place for states. Under the RPO, revised targets set in 2016 require that the electricity mix should include 17% renewable generation by 2019 and 8% solar generation by 2022 (both targets exclude hydro power). States in India have historically missed achieving their RPO, and the current targets are also considered ambitious, along with the recognition that renewable targets are not necessary to achieve

India's emissions intensity targets as other measures may be more effective (Tongia, 2016). The very current question of what policies should be used to implement India's NDC motivates our inquiry, which involves comparing alternative approaches for meeting India's targets. Specifically, we simulate India's CO₂ emissions intensity targets through an economy-wide cap-and-trade scheme, and evaluate the welfare implications of including non-fossil electricity targets in India's NDC. To do this, we develop a model of the Indian economy and simulate the welfare impact of achieving India's emissions intensity targets through a CO₂ pricing policy implemented via an emissions quota indexed to GDP growth, with and without the non-fossil electricity targets imposed through an RPS.

If pricing carbon either through an emissions tax or a cap-and-trade scheme³ can equate the marginal cost of greenhouse gas (GHG) emission control with the marginal damages of climate externalities, the resulting level of emissions should be Pareto optimal. However, the implementation of optimal carbon price is hindered by multiple political economy constraints such as asset specificity (Murphy, 2002) and regulatory capture (Stigler, 1971) on the producer side and collective action (Olson, 1984) and principal agent problems (Eisenhardt, 1989) on the consumer side (Jenkins, 2014). The presence of such constraints leads to a second best scenario (Lipsey & Lancaster, 1956) in climate change mitigation, where a sub-optimal mix of policies, including market and regulatory measures, may keep ambitious emission targets within reach, but at the expense of economic efficiency (Bertram *et al.*, 2015; Jenkins & Karplus, 2016).

Morris *et al.* (2010) analyze the interaction of an RPS with a cap-and-trade scheme through a global computable general equilibrium (CGE) model (the MIT Economic Projection and Policy Analysis – EPPA – model) and find that adding an RPS to a cap-and-trade scheme increases the net present value welfare cost of meeting the emissions target while decreasing the CO₂ permit price to meet the target. The welfare cost increases due to higher electricity prices and lower demand, induced by a higher share of more expensive renewables in the mix, whereas CO₂ permit price decreases as mandated renewables achieve part of the emission reduction, bringing down the marginal cost that can achieve the remaining reduction. Using a multi-region, multiple-household CGE model of the US economy, Rausch & Karplus (2014) compare regulatory policies, such as an RPS, with a cap-and-trade scheme and demonstrate that regulatory policies result in substantially greater costs than a cap-and-trade system that achieves the same reductions in emissions at the national level.

1 The non-fossil targets are conditional on receiving technology transfers and low cost international finance including from the Green Climate Fund (GCF).

2 India levies a coal tax of Rs. 400 per tonne (US\$ 6.27 per tonne), with the revenues being recycled to states as a compensation for the recently implemented Goods and Services Tax (Economic Times, 2017).

3 Under certain assumptions, a carbon tax and a cap-and-trade scheme are expected to lead to similar outcomes (Weitzman, 1974; Aldy & Stavins, 2012). For the purpose of this work, we refer to both as carbon pricing policies.

Implementation of an optimal CO₂ price in India seems likely to be no more feasible than elsewhere in the world, and indeed the policy approach in its NDC does not mention CO₂ pricing. We study the impact of alternative instruments on India's economy, emissions, and electricity system. Using a newly developed multi-sectoral economic model of India with energy sector detail, we simulate an economy wide cap-and-trade scheme and an RPS to implement India's NDC against a reference case of no climate policies. We evaluate how consumer welfare, economy-wide and sectoral emissions, and electricity mix of India change under a carbon pricing regime, with and without an RPS for non-fossil electricity. Recognizing the rapidly declining costs of wind and solar power (IRENA, 2016), and India's policy support for their deployment, we also evaluate the interaction between the falling costs and India's NDC implementation.

Prior work on analysis of India's climate trajectories involves application of both global and regional models. Fisher-Vanden *et al.* (1997) use a set of 14 multi-sector regional CGE models to determine comparative costs of stabilizing GHG emissions through two alternative policy instruments – carbon tax and global tradable permits – and find that a global tradable permits system with grandfathered emission allocation (based on 1990 emission levels) and equal per capita allocation of emission allowances would be less costly than carbon taxes for India to stabilize emissions. Shukla *et al.* (2008) use an integrated modeling framework, including a global multi-region and multi-sector CGE model, to study two alternative pathways for low-carbon growth in India – a pure carbon tax, and a combination of carbon tax with sustainable policies (assumptions on behavioral, technological, institutional, governance, and economic measures that promote sustainable practices). Ojha (2009) emphasizes the heterogeneity in households and the expectation that climate policies have different impacts on households belonging to different income and expenditure groups (Poterba, 1991; Bull *et al.*, 1994; Hassett *et al.*, 2009). Multiple households segregated by income levels are incorporated in a single country CGE model to study the distributional impacts of carbon policies on shifts in consumption patterns. Simulated climate policies include carbon tax and permit trading, with various revenue recycling options, and the findings echo those of Fisher-Vanden *et al.* (1997).

Our work offers significant improvement on three fronts. First, we simulate carbon pricing as a benchmark policy to achieve India's actual climate targets, instead of comparing the extent of emissions reduction likely to be achieved through hypothetical carbon tax and cap-and-trade schemes. The non-fossil electricity targets introduced through an RPS are also structurally similar to India's aggregated RPO. Our work is intended to be valuable to policymakers by informing them of the impacts of achieving India's proposed

climate targets. Second, we elaborate the representation of India's electricity sector in the model, focusing in particular on representing renewable technologies, and simulate the impact of India's non-fossil electricity targets. Finally, we explore sensitivity of outcomes to declining wind and solar power costs and evaluate their policy implications.

The remainder of this paper is structured as follows. In section 2, we describe our modeling framework, data sources, and simulation scenarios. Results are presented and discussed in section 3. Section 4 concludes.

2. Methodology

2.1 Modeling Framework

We develop a multi-sector applied general equilibrium model of the Indian economy that links economic activity with energy production and CO₂ emissions from burning fossil fuels. This structure builds in important economy-wide feedbacks associated with policy shocks; for instance, it reflects how a CO₂ price affects patterns of production and demand across all economic sectors by raising the cost of fossil fuel intensive activities. The model includes a representative agent for firms, households, and government. Firms employ primary factors (labor, capital, and natural resources) and purchase intermediate inputs to produce goods and services. Households own primary factors of production and provide them to firms, receive income from capital earnings, wages/salaries, resource rents, and transfers from the government, and pay taxes to the government. The government is a passive entity that collects taxes from households and producers to finance government consumption and transfers. Investment is modeled as a fixed proportion of expenditure by households to serve as a proxy for future consumption. Sectoral imports and exports capture interactions with the rest of the world. The model is calibrated using historical data and projections for macroeconomic variables and technology costs to generate a 2030 reference case, which is used as base to conduct comparative static analysis of policy impacts.

The economy of India is represented through eighteen sectors (**Table 1**) aggregated from sixty eight sectors in the GTAP-Power database (Peters, 2016), which is based on the ninth version of the GTAP dataset (Aguilar *et al.*, 2016), and represents global economy in 2011. The energy sector is described in significant detail, comprising of eight electricity sectors (including transmission and distribution) and four other energy sources, namely coal, crude oil, gas, and refined oil. CO₂ emissions are produced by the consumption of fossil fuel sectors of coal, crude oil, and gas, by firms and households. Other major industrial sectors are aggregated in energy intensive industries, manufacturing, and mineral production. Agriculture, food and beverages, and services include aggregation of the remaining sectors in the economy.

Table 1: Sector specification in the model

Category	Sectors
Energy - Electricity	Coal Power
	Gas Power
	Hydro Power
	Nuclear Power
	Oil Power
	Wind Power
	Solar Power
	Transmission and Distribution
Energy - Other	Coal
	Crude Oil
	Gas
	Refined Oil
Major Industries	Energy Intensive Industries
	Manufacturing
	Mining and Minerals
Other	Agriculture
	Food
	Services

The eighteen sectors are each described by a separate multi-level nested constant elasticity of substitution (CES) production function with nesting structures to provide for substitution between energy composite, electricity, capital, labor, resources, and other intermediate inputs. An additional production function describes advanced solar technology as the benchmark data comprises of negligible solar power. Nested CES functions are also used to describe consumer, government, and investment sectors. All industries are characterized by constant returns to scale and trade in perfectly competitive markets.

Nesting structures are described in **Figure 1**. Horizontal lines indicate zero elasticity of substitution between inputs while slanted lines indicate a non-zero elasticity.

Figure 1(a) represents the nesting structure of all sectors except agriculture, electricity, fossil fuel, and final consumption. Primary energy sources are grouped in the non-electricity energy nest and substitute with aggregate electricity. Final output is comprised of an energy composite, land, labor, capital, resources, and other intermediate inputs. Figure 1(b) represents agriculture, where land is moved from the value added nest to the energy and other Armington input nest, reflecting the significance of land for agriculture, and limiting its substitutability by allowing for a small elasticity of substitution with other inputs.

Electricity production is represented by three separate nesting structures for benchmark electricity sources, and one

for advanced electricity technology to facilitate new solar penetration in policy scenarios. Figure 1(c) outlines fossil electricity production, and includes renewable electricity credits to enforce prescribed non-fossil electricity capacity targets through an RPS. Figure 1(d) and (e) for non-fossil electricity illustrate generation of certificates with electricity output. The expansion of non-fossil electricity capacity is constrained by technology specific fixed-factors (TSF). In our model, TSF represents resource and other political constraints, not directly considered in the model, which may impose barriers to growth of certain technologies.

We impose a zero elasticity of substitution between TSF and other inputs for nuclear, hydro, and benchmark solar power. Due to resource and political constraints, the growth of nuclear and hydro power is uncertain, and these technologies are represented by fixing targets for 2030 based on projections in IEA (2015). Besides, as most of India's current solar capacity has been added post 2011, the representation of solar power in the benchmark data (2011) is negligible. We therefore assume that the cost shares in benchmark solar are not representative, and allow solar growth only as an advanced technology, restricting benchmark solar to its existing capacity.

The specification of wind power is different from other non-fossil electricity sources. Wind capacity in India is projected to grow considerably (IEA, 2015), with a government specified target of 60 GW installed capacity for 2022 (NITI Aayog, 2015). Besides, benchmark data include 2% wind power production (24 TWh), suggesting that our representation of cost shares are consistent with on-the-ground reality. We include a non-zero elasticity of substitution between other inputs and the TSF to offer flexibility in wind capacity expansion. The elasticity is estimated from price elasticity of supply and wind cost shares, using methods specified in Rutherford (2002) and supply elasticity value specified in Böhringer *et al.* (2012).

Solar expansion is represented as an advanced technology introduced as backstop technology (McFarland *et al.*, 2004). Figure 1(f) describes solar power generation using capital and labor as inputs, and constrained with a TSF. The TSF represents short-term constraints on specialized capital equipment, specialized skilled labor, or supply of inputs unique to the technology (Morris *et al.*, 2014),⁴ as well as increased costs due to intermittency, which may limit the growth of such technologies. Estimated cost shares are normalized to one and multiplied with a markup to

4 The TSF in a static model plays a different role than in a recursive dynamic model illustrated in (Morris *et al.*, 2014). In a recursive dynamic model, the TSF reflects dynamics of adoption and could become irrelevant over time as the incentives to adopt new technology lead to cost reductions. In a static model, as discussed, the TSF is employed as a mechanism to reflect factors not directly included in the model but which may constrain the growth of certain types of technologies.

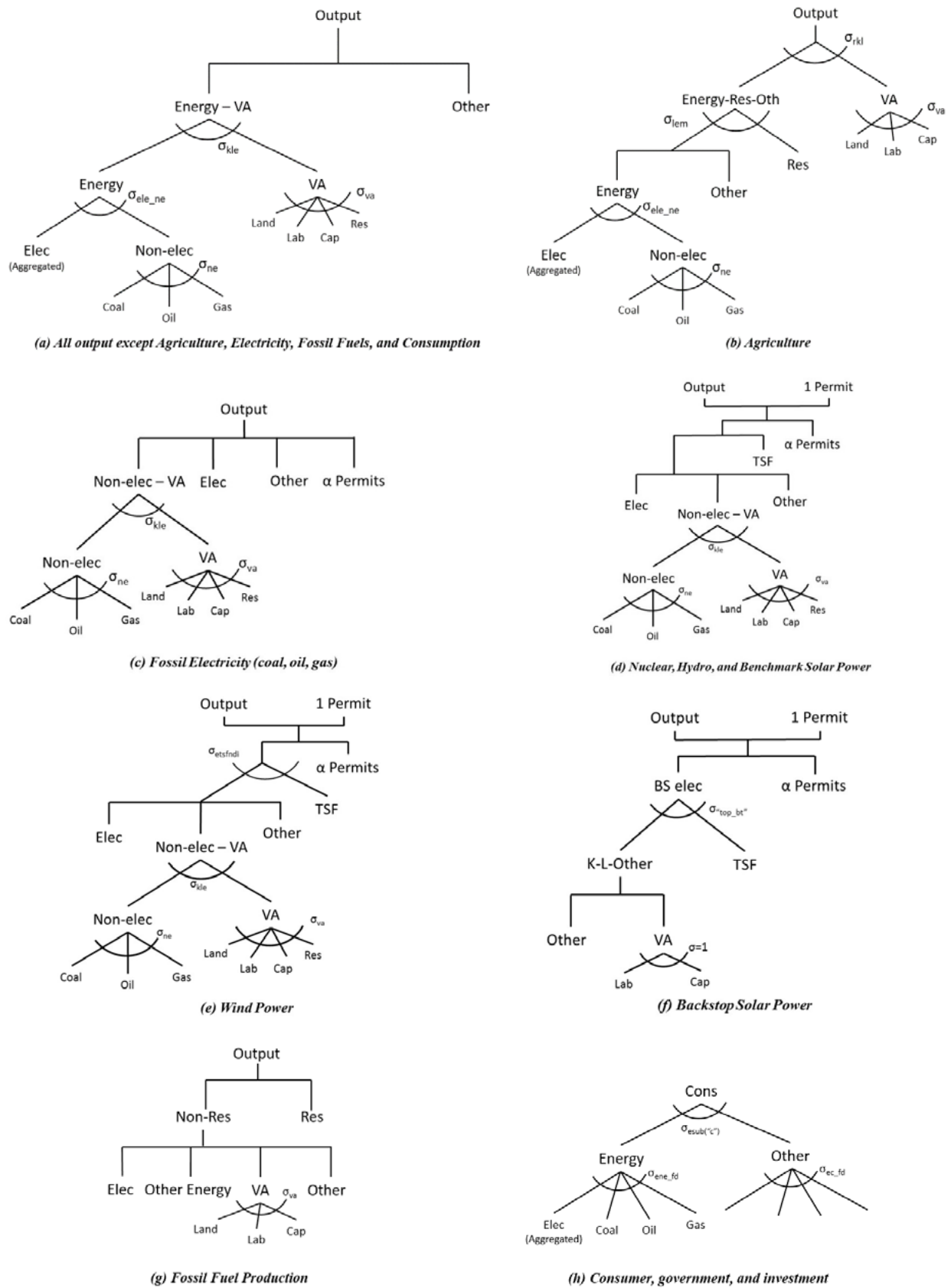


Figure 1: Nesting structures for production blocks in the India CGE Model

represent the relative cost of advanced technology over the average cost of electricity. The markup is varied to perform a sensitivity analysis of solar penetration at different generation costs relative to those of non-solar electricity.

Finally, Figure 1(g) and (h) represent fossil fuel production and consumption, respectively. By assuming India is a price taker in the international oil and gas market, the fossil fuel production function allows for fossil fuel prices to be specified exogenously by endogenously choosing the level of resources for each fossil fuel.

International trade is modeled following an Armington approach (Armington, 1969), where goods and services purchased by firms and households are composites of domestic and imported varieties. The elasticity of substitution between domestic and imported goods is set to zero reflecting the assumption that climate policies in India will not be implemented independently of the rest of the world, and domestic goods may not see competitive threats (or advantages) imposed by higher (or lower) domestic energy prices.⁵

2.2 Data Sources and Parametrization

Cost shares in the production functions are parametrized from GTAP-Power database. Elasticity values for production blocks are provided exogenously and closely follow those in the MIT EPPA model (Chen *et al.*, 2015), which are drawn from an extensive literature review (**Appendix A**).

Advanced solar is parametrized bottom up using levelized cost of electricity estimates from NITI Aayog (2015). Operating and maintenance (O&M) costs over the project life are discounted to present value and added to capital expenditure (capex) to obtain PV of total costs, from which percentage capex and percentage O&M are derived (**Appendix B**).

⁵ Assessing changes in sectoral competitiveness due to cross-country differences in climate policies requires a global model. In our single-country framework, if desired, changes in world prices relative to those in India could be imposed in the model, once they are estimated elsewhere. We do not consider such relative price changes in this study.

The cost share allocated to TSF is kept similar to that for wind power, conforming with an approach of treating wind and solar production equivalently (for instance, see Chen *et al.* (2015)).

Additional data required to simulate policy scenarios for 2030 are listed in **Table 2**. The required parameters include GDP growth in India from 2011 to 2030 (GDP multiplier), expected exogenous growth in fossil fuel prices (fossil fuel multipliers), expected efficiency improvements in energy production technologies (Autonomous Energy Efficiency Improvement – AEEI – multiplier), and factors for simulating India’s NDC on emissions intensity and non-fossil targets.

The GDP multiplier is based on long term GDP forecasts from the OECD (2017). Reported in real terms in 2010 US\$ PPP, India’s GDP grows from \$3.90 trillion in 2011 to \$11.16 trillion 2030 at a compounded annual growth rate (CAGR) of 5.7%. This is a conservative estimate, considering that average annual GDP growth rate of India from 1992, when economic reforms were introduced, to 2015 has been 6.78% (World Bank, 2015).

Fossil fuel multipliers specify exogenous increase in fossil fuel prices in 2030. We assume coal price to be constant as coal is not a scarce resource in India and domestic coal constitutes bulk of the consumption. As crude oil prices fluctuate in the short and medium term, the crude oil price multiplier is obtained by smoothing the international crude oil price trend between 2001 to 2030, taking historical and projected prices from U.S. EIA (2017). The multiplier for natural gas price is the same as for crude oil, as natural gas prices are typically strongly correlated with crude prices (Brown & Yücel, 2008).

AEEI multiplier represents future improvements in energy production technologies, leading to lower inputs per unit energy produced. We derive AEEI multiplier from the MIT EPPA model (Chen *et al.*, 2015), assuming 1% annual

Table 2: Required parameters for policy scenarios

Parameter	Unit	Value	Source
GDP Multiplier (2011–2030)	-	2.86	OECD (2017)
Fossil Fuel Price Multipliers (2011–2030)			
Coal	-	1.00	
Oil	-	1.13	
Gas	-	1.13	U.S. EIA (2017)
AEEI Multiplier		0.826	Chen <i>et al.</i> (2015)
Emissions Intensity Target for 2030	% of Benchmark Emissions Intensity	71.06	Gol (2015); Appendix C
Non-Fossil Target for 2030	% of installed capacity	40	Gol (2015)
Non-Fossil Production Target for 2030	% of Electricity Production	28	Appendix D

efficiency improvement, leading to 17.4% improvement from 2011 to 2030.

Calculation of emissions intensity targets is specified in **Appendix C**.

Conversion of non-fossil electricity installed capacity targets for 2030 to production targets is specified in **Appendix D**. We first calculate aggregate fossil and non-fossil capacity factors (CF) for 2015 using installed electricity capacity and production values from CEA (2015) using Equation (1).

$$CF = \frac{\text{Electricity Production}}{\text{Installed Capacity} \cdot n_h \cdot d_y} \quad (1)$$

where, $n_h = 24$ hours, and

$d_y = 365$ days

Percentage capacity targets for 2030 are then converted to percentage production targets using Equation (2) and (3), which can easily be derived from equation (1):

$$P_{nf}(\%) = C_{nf}(\%) * \left(\frac{CF_{nf}}{CF_{total}} \right) \quad (2)$$

$$P_f(\%) = C_f(\%) * \left(\frac{CF_f}{CF_{total}} \right) \quad (3)$$

where $P_{nf}(\%) =$ Percentage production level of non-fossil/fossil electricity

$C_{nf}(\%) =$ Percentage capacity of non-fossil/fossil electricity

$CF_{nf/f/total} =$ Aggregate capacity factor for non-fossil/fossil/total electricity

We assume that aggregate capacity factors for fossil and non-fossil electricity sources respectively in 2030 will be the same as in 2015, but a higher percentage of non-fossil electricity will decrease the aggregate capacity factor of the electricity sector.⁶ This leads to circularity as calculation of non-fossil electricity production levels for 2030 require total capacity factor, but total capacity factor depends on non-fossil electricity production levels. To address this, we iterate total capacity factor to arrive at percentage production levels of fossil and non-fossil electricity for 2030 that add up to 100%. This generates overall capacity factor of 0.44 (lower than 0.46 for 2015), and a non-fossil electricity production target of 28%.

The model is formulated as a mixed complementarity problem (MCP) (Mathiesen, 1985; Rutherford, 1995) in the Mathematical Programming System for General Equilibrium Modeling (MPSGE) (Rutherford, 1998) and the General

Algebraic Modeling System (GAMS) modeling language. Using the PATH solver (Dirkse & Ferris, 1995), it is solved statically in two stages, reflecting the Benchmark economy in 2011 and reference as well as policy scenarios in 2030 (target year for India's NDC).

2.3 Scenarios

We implement a forward calibration simulation to first generate a 2030 Reference scenario. We include three policy scenarios to simulate instruments to achieve India's NDC targets and their combination. The reference as well as policy scenarios include the same assumptions about factor productivity growth, fossil fuel price in 2030 and AEEI.

Our policy scenarios are summarized in **Table 3**. In the Emissions-Intensity scenario, we impose India's NDC objective of reducing emissions intensity of the GDP by 34% (taking mean of proposed 33–35 percent reduction) by 2030 from 2005 levels. As described in **Appendix C**, this translates to a reduction by 28.94% from benchmark (2011) level. This is simulated as an economy-wide cap-and-trade policy with the emissions cap determined endogenously to satisfy a constraint on emissions relative to GDP. We evaluate the impact of this target on total and sectoral emissions, consumption, electricity mix, and also identify the corresponding carbon price.

The Non-Fossil scenario corresponds to India's non-fossil electricity capacity target for 2030. The target of 40% installed non-fossil electricity capacity by 2030 corresponds to 28% electricity production (**Appendix D**), and is imposed as an RPS. This provides information about independent impact of the non-fossil targets.

In practice, both emissions intensity and non-fossil electricity targets will be jointly pursued. The Combined scenario simulates this by combining economy-wide emissions trading with an RPS. While both Emissions-Intensity and Combined scenarios lead to the same emission intensity in 2030, the Combined scenario includes the additional constraint of non-fossil electricity targets. Comparing these scenarios offers a direct assessment of the implications of pursuing

Table 3: Policy Scenarios for 2030 in the India CGE Model

Scenario	Description
Emissions-Intensity	An economy-wide emissions trading scheme reduces the emissions intensity of the GDP in 2030 to 28.94% lower than that in 2011
Non-Fossil	An RPS enforces that non-fossil electricity sources constitute 28% of India's electricity production in 2030 (40% of India's installed electricity capacity)
Combined	A combination of both EMINT and NFOS scenarios

⁶ Strictly speaking, the aggregate fossil and non-fossil capacity factors will also change. Fossil and non-fossil electricity sources are aggregates of different power sources with varying capacity factors, hence the aggregate capacity factors will change as constituent source mixes change. However, for simplicity, and in the absence of more information, we assume that the aggregate fossil and non-fossil electricity capacity factors remain the same.

Table 4: Summary of key base results (All dollar values are in 2011 US \$)

Metric	Unit	Scenarios			
		Reference	Emissions-Intensity	Non-Fossil	Combined
Welfare Loss (w.r.t. Reference)	US\$/MT CO ₂		1.27	13.01	9.60
Emissions	MT	4567.62	3591.65	3824.01	3572.25
Emissions Intensity	MT CO ₂ / US\$	0.79	0.62	0.66	0.62
Carbon Price	US\$/MT CO ₂		23.38		6.17
Total Electricity Production	TWh	3070.97	2825.12	2427.72	2416.89
Fossil Electricity	TWh	2678.54	2278.89	1756.00	1746.26
Non-Fossil Electricity	TWh	392.43	546.23	671.73	670.64

non-fossil electricity targets along with economy-wide emissions reduction.

Our base analysis fixes the cost of wind and solar power at levels that represent declines from their benchmark costs. The cost of wind power incorporates AEEI similar to those for fossil power, thus accounting for technological improvements, and the cost of solar power is fixed at parity with the average benchmark cost of electricity, reflecting the trend observed in certain recent solar auctions in India (LiveMint, 2017). However, there is considerable uncertainty in the variation of these costs in the future. IRENA (2016) projects that appropriate policy and regulatory frameworks may enable significant additional cost reductions in wind and solar power such that by 2025 the global weighted average LCOE of solar PV could fall by as much as 59% and that of onshore wind could fall by 26%, relative to 2015. Through our sensitivity analyses, we simulate additional policy-induced cost declines beyond the technology-induced declines in the base analysis. The cost variations are simulated exogenously such that the cost of wind power expansion is varied by altering the elasticity of substitution between TSF and other inputs, and of solar power by altering the markup. The supply elasticity for wind electricity in the base case is 12.66 (Böhringer *et al.*, 2012), which corresponds to an elasticity of substitution of 0.29 between the TSF and other inputs. Solar cost share markup in base case is set to 1. These specifications provide a sensible comparison across policies at fixed costs of wind and solar power. As the cost variations represent policy-induced changes, the reference case is not re-run in the sensitivity analyses.

3. Results

3.1 Scenarios with Fixed Costs of Wind and Solar Power

First, we simulate the three policy scenarios while holding wind and solar power costs fixed. **Table 4** summarizes key base results. We first compare the cost of emission reduction under different policies (**Figure 2**) through the

decrease in consumer welfare from reference, measured as the Hicksian equivalent variation (EV). Welfare loss is the lowest under Emissions-Intensity (0.04%), and significantly higher under Non-Fossil and Combined policy scenarios (0.29% under each). A better metric to compare the efficiency of different policies in reducing emissions is the welfare loss per ton of CO₂ reduced (**Figure 3**). Compared to reference, the cost of reducing a tonne of CO₂ is lowest in the Emissions-Intensity scenario, and is more than ten times higher in the Non-Fossil scenario, reflecting the efficiency of economy-wide emission reduction policies. Simulating both cap-and-trade and RPS in the Combined scenario results in a decline in welfare loss per unit of emission reduction over the Non-Fossil scenario. This is because some low-cost emissions reduction measures are incentivized by economy-wide carbon pricing, reducing the average cost of emission reduction. Notably, the carbon price to achieve the required emission reduction drops significantly in the Combined scenario, as most of the targeted emission reduction is achieved through the mandatory RPS. Thus, imposing non-fossil electricity in the mix has the twin impact of increasing welfare loss but decreasing the carbon price.

Next we compare reductions in emissions and emissions intensity. As expected, in all policy scenarios, total emissions as well as emissions intensity decrease relative to the reference. The Emissions-Intensity scenario sees emissions decline by 27% over reference, while consumption per ton of emissions reduction falls modestly. Non-fossil electricity targets result in 6% higher emissions than under the emissions intensity target, while achieving 76% of the NDC target emissions intensity reduction. They are also significantly more costly in terms of welfare loss, compared to using pricing to achieve target CO₂ intensity.

Figure 4 illustrates emissions from the four highest emitting sectors, namely Coal Power, Energy Intensive Industries, Services, and Consumer, and combines emissions from the remaining sectors in “Other Sectors” under all scenarios. The significant decline in emissions under the Emissions-Intensity

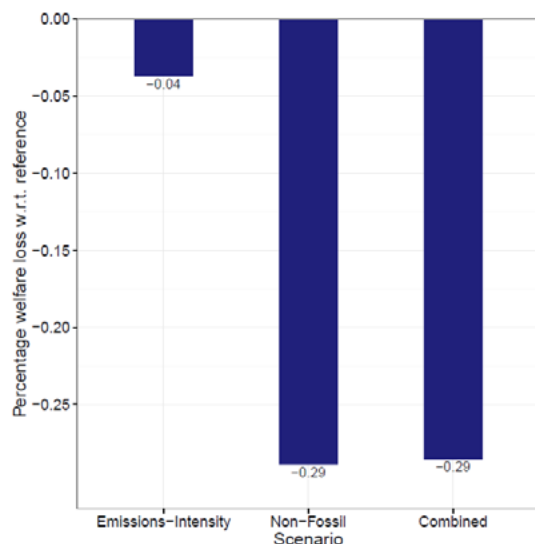


Figure 2: Change in consumption from reference under different scenarios in 2030

scenario is driven by reductions in emissions from coal power and energy intensive industries. However, under the Non-Fossil scenario, total emissions do not decline to equivalent levels as emission reductions in coal power are more than offset by increased emissions in energy intensive industries as they substitute expensive electricity with (now cheaper) direct use of fossil-based energy sources. In other words, emissions leak to non-target sectors under sector specific policies.

Figure 5 describes the electricity mix under different scenarios in 2030. In the Reference case, total electricity production in India is projected to be nearly three times the level in 2011. Most of the increase comes from expansion of coal power, which more than triples in 2030. Other fossil based electricity sources also increase by varying amounts. Among non-fossil electricity sources, hydro power rises to its allowed scope for expansion but nuclear power production is less than the maximum allowed in the model, and return to the nuclear TSF falls to zero. This reflects the higher cost of producing nuclear power compared to thermal power, which restricts its expansion in a no-policy scenario. The share of wind power in the reference also does not rise significantly beyond benchmark level, suggesting that even though wind has a non-trivial share in benchmark, the cost of producing wind power is still high relative to thermal power. Thus, without favorable policies, wind power may see only moderate expansion. Further, in the absence of favorable policies, solar power is unlikely to see any growth. Electricity production in 2030 drops by 8% in the Emissions-Intensity scenario. As carbon content per energy unit is highest for coal, most of the decrease comes from a reduction in coal power, affirmed by a relatively smaller drop in gas power. Both nuclear and hydro power reach their maximum allowable level. Besides, wind penetration increases slightly, indicating that with fossil electricity

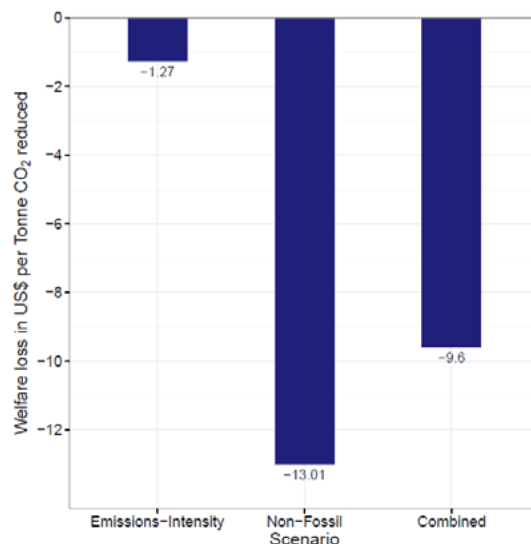


Figure 3: Change in consumption per unit emission reduction under different scenarios in 2030

sources becoming more expensive, renewable power will compete with them in adding to the total electricity production. A higher share of solar, driven by advanced solar technology, further underscores the competitiveness of renewable electricity under emission constraints. Overall, total electricity demand drops as the average electricity price increases to account for more expensive fossil power and a higher share of non-fossil power.

Electricity production drops further in the Non-Fossil and Combined scenarios. Introducing a higher share of expensive non-fossil electricity in the mix (28% in Non-Fossil and Combined compared to 13% in Reference and 19% in Emissions-Intensity) increases the price of electricity, consequently reducing demand by an additional 14% over Emissions-Intensity scenario. All fossil electricity sources see a decline, whereas shares of non-fossil sources increase. Under the Combined scenario, the electricity mix is similar to that in Non-Fossil scenario, as the additional emissions reduction mandated by the emissions intensity target in the Combined scenario is achieved more cost-effectively through sectors other than the electricity sector.

3.2 The Impact of Alternative Wind and Solar Costs

While our base analysis suggests that an RPS prescribing non-fossil targets adds considerably to the cost of emissions reduction, the cost difference depends significantly on the cost at which non-fossil electricity is available. In the following analyses, we evaluate how policy-induced changes in wind and solar power costs would interact with policy outcomes.

Variation in wind power cost is simulated by adjusting the elasticity of substitution between the TSF and other inputs in the wind production block. Conceptually, a higher elasticity of substitution indicates reduced impact of the TSF

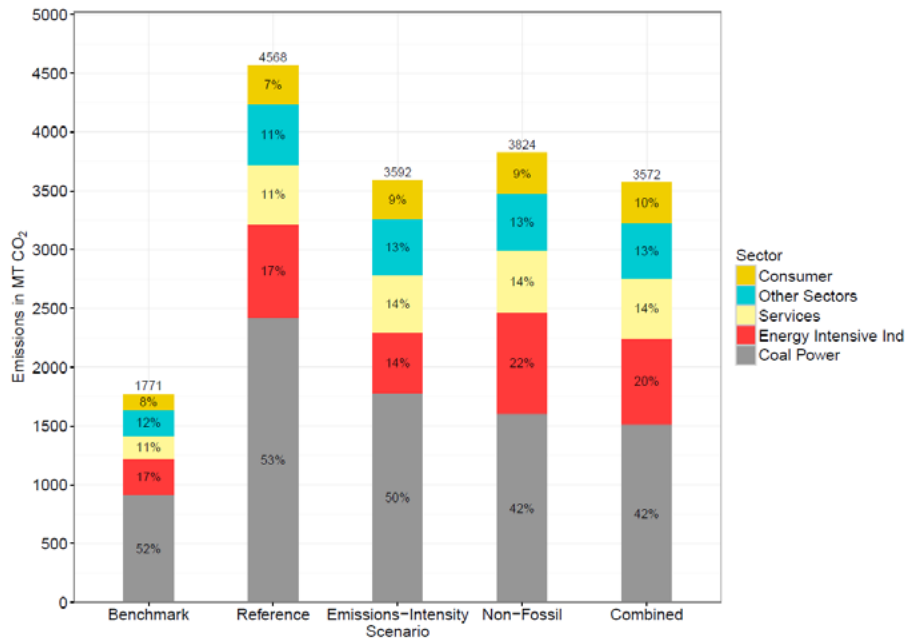


Figure 4: Emissions by sector in 2030 under different scenarios

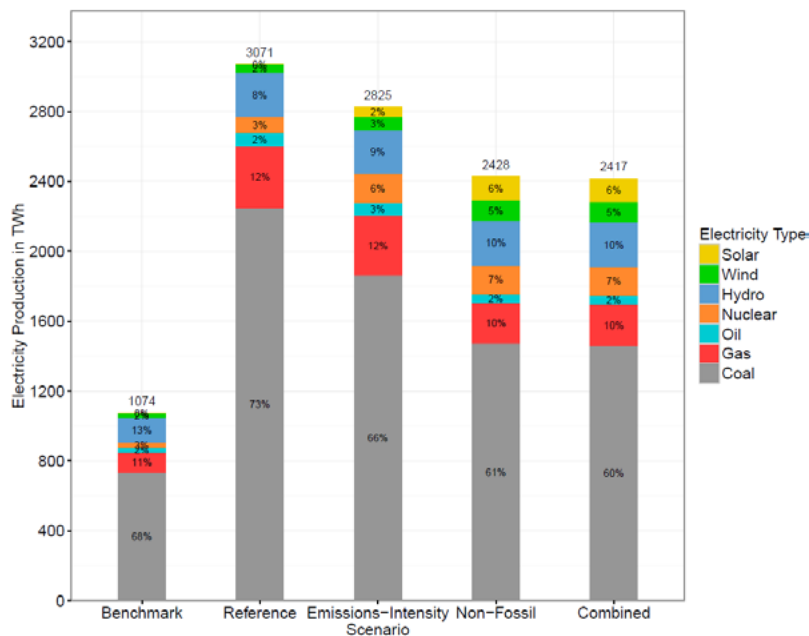


Figure 5: Electricity mix in India in 2030 under different scenarios

constraint, leading to cheaper expansion of wind power. Variation in substitution elasticity thus serves as a proxy for the variation in future wind power expansion cost. Cost variation for solar power is simulated directly by varying the markup on the cost of production. Conceptually, this may indicate availability of cheaper capital, policy changes for improved offtake, and better regulatory enforcement, among other improvements. Solar cost variation can also be simulated by varying the substitution elasticity between TSF and other inputs, but the outcome will be similar.

3.2.1 Carbon Price and Welfare Loss under different scenarios and alternative costs of wind power expansion and solar power

Table 5 illustrates how two metrics vary with the cost of wind power expansion and of solar power: first, the observed carbon price to implement the emissions intensity target with and without the RPS in Emissions-Intensity and Combined scenarios respectively, and second, the welfare loss under the two scenarios. The base results are highlighted. All scenarios listed here lead to India’s target emissions intensity for 2030.

Our results highlight several tradeoffs between the political feasibility and cost effectiveness of economy wide and sector specific policies. The following outcomes are noteworthy:

Economy wide emission intensity targets lead to significantly higher carbon prices compared to those in combined targets. Carbon prices are higher to achieve the required reduction in the absence of additional binding constraints. In the Combined scenario, the RPS increases average electricity prices, resulting in a decline in electricity demand and consequently in emissions. The remaining emission reduction required to meet the emissions intensity target is achieved through low-cost emissions reduction measures resulting in lower carbon prices. Thus, combining a carbon pricing policy with non-fossil electricity capacity targets may result in politically feasible carbon prices.

Under Emissions-Intensity scenario, as expected, carbon price decreases with cheaper wind and solar power as the marginal abatement cost drops. On the contrary, cheaper wind and solar power in the Combined scenario is associated with *increases* in the carbon price. This is explained by the opposing impacts of cheaper renewable power in a capacity-based RPS policy. While cheaper renewable power facilitate emissions reduction through larger capacity addition, they also increase total electricity demand due to lower average electricity costs. Higher electricity demand may increase fossil electricity production (**Figure 8** and **Figure 9**). The overall impact is dominated by rising emissions (**Figure 7**) and consequently higher carbon prices.

Emissions-Intensity scenario sees lower welfare loss compared to the Combined scenario, and may even lead to minor welfare gains relative to the Reference scenario. While reduction in welfare loss follows directly from the efficiency of economy-wide carbon policies, welfare gains occur likely due to a combination of technology advancements freeing up labor and capital from solar power production at the cheapest levels, and carbon pricing potentially correcting certain pre-existing tax/subsidy distortions. Indeed, electricity is heavily subsidized in India (IISD, 2012), and a significant reduction in coal power, which is the main benchmark electricity technology, might be contributing to welfare gains. On the contrary, Combined scenario results in higher welfare losses, higher by 7.5 times on a per ton CO₂ basis in the base case. Thus, while combined targets may lead to politically feasible carbon prices, the higher welfare loss highlights their lower economic efficiency in reducing emissions.

The welfare loss decreases with cheaper wind and solar power in both scenarios. This follows directly from the availability of cheaper electricity, and consequently, the comparatively lower reduction in electricity demand.

3.2.2 Impact of alternative wind and solar costs on policy outcomes

Figure 6 shows the costs in terms of welfare loss per tonne of CO₂ reduced under different scenarios that vary in the cost of wind and solar power. Owing to low levels of wind

Table 5: Comparison of carbon price and cost of emission reduction under different scenarios. Increasing wind elasticity means lower expansion costs, while falling solar markup corresponds to lower input costs.

Wind Elasticity	Carbon Price		Welfare Change	
	Emissions-Intensity USD (2011) per tonne of CO ₂	Combined USD (2011) per tonne of CO ₂	Emissions-Intensity USD (2011) per tonne CO ₂ reduced	Combined USD (2011) per tonne CO ₂ reduced
0.15	24.48	2.81	-1.48	-19.30
0.20	24.17	3.61	-1.42	-16.13
0.25	23.77	4.81	-1.34	-12.55
0.29	23.38	6.17	-1.27	-9.60
0.35	22.64	8.87	-1.15	-5.70
0.40	21.84	11.16	-1.02	-3.44
0.45	20.82	12.79	-0.87	-2.02
Solar Markup				
1.3	25.73	4.83	-1.97	-15.12
1.2	25.73	5.20	-1.97	-13.48
1.1	24.49	5.64	-1.71	-11.65
1.0	23.38	6.17	-1.27	-9.60
0.9	22.46	6.82	-0.70	-7.29
0.8	21.49	7.63	0.09	-4.71
0.7	20.37	8.65	1.18	-1.81

and solar penetration in Emissions-Intensity scenario, the welfare loss is small, and further decreases at lower wind and solar costs. In the Non-Fossil and Combined scenarios, the cost of emission reduction is significantly higher at expensive wind and solar power but drops sharply with decreasing costs of wind and solar power. These results illustrate that at low renewable energy costs, achieving both economy wide targets as well as sector specific targets can be similar in cost.

Further, as Figure 7 shows, final emission levels in Combined and Emissions-Intensity scenarios are similar – an outcome ensured by the emissions intensity limits in both scenarios. The Non-Fossil scenario by itself cannot achieve the target emissions reduction and in fact leads to higher emissions as wind and solar power become cheaper. This is explained by higher total electricity levels at cheaper wind and solar power under an RPS.

Electricity levels at different costs of wind and solar expansion are plotted in Figure 8 and Figure 9. In the Emissions-Intensity scenario under a carbon price, cheaper wind and solar power drives down marginal CO₂ abatement cost

and leads to higher levels of non-fossil power to achieve emissions targets (panel 3: blue line), accompanied by a decline in fossil power (panel 2: blue line). On the contrary, when non-fossil capacity targets are included under Non-Fossil and Combined scenarios, the availability of cheaper wind and solar power in the electricity mix decreases the average electricity price, resulting in an overall demand pull, and consequently higher levels of fossil electricity as well (panel 2: green and red lines), while maintaining the required non-fossil power production share of 28%. This is consistent with the lower welfare losses and increased emission levels under the Non-Fossil and Combined scenario observed in Figure 6 and Figure 7 respectively. Nevertheless, the total electricity levels in Non-Fossil and Combined scenarios continue to be lower than those in the Emissions-Intensity scenario, and are comparable only at very low costs of wind expansion.

4. Conclusion

We have employed a CGE model of the Indian economy with detailed representation of the electricity sector to

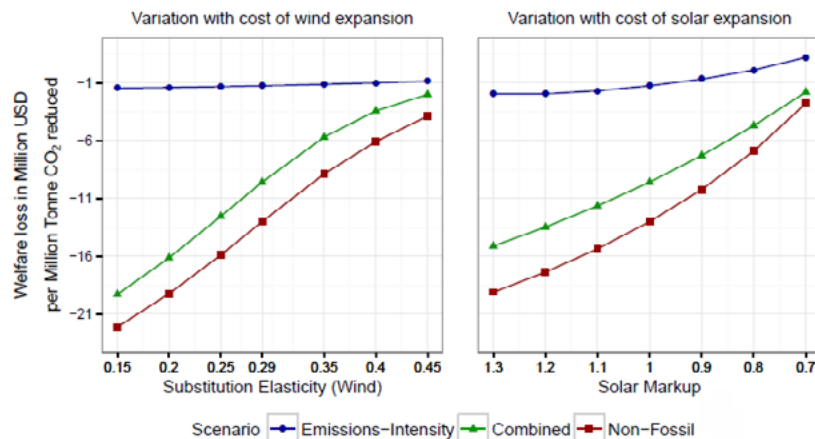


Figure 6: Variation in welfare loss per unit emission reduction with varying cost of wind and solar power expansion

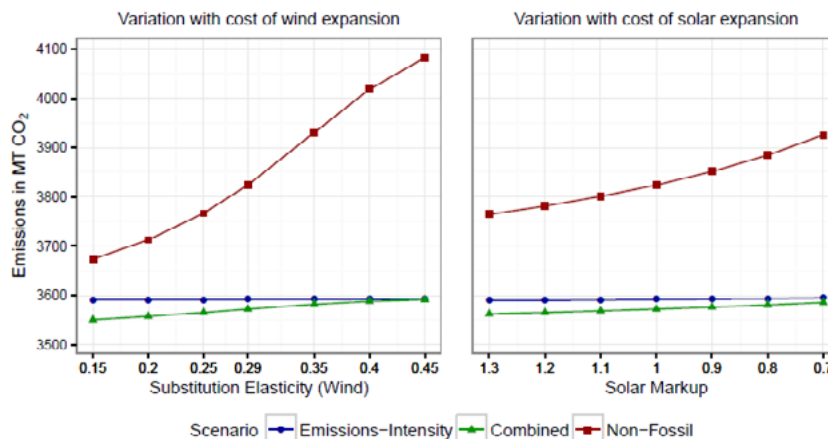


Figure 7: Variation in total emission with varying cost of wind and solar power expansion

analyze the impacts of India’s climate targets. In particular, we have analyzed the implications of non-fossil electricity targets as a means to achieve India’s emissions intensity reduction targets, by assessing their impact on consumer welfare, electricity mix, and sectoral emissions. We have also looked at the interaction of variable wind and solar costs with policy outcomes.

We find that an economy-wide emissions reduction policy simulated through a carbon price results in the lowest decline in consumer welfare to achieve the target emissions intensity. Further, emissions decrease across all fossil energy consuming sectors, and not only in the electricity sector. On the contrary, including non-fossil electricity capacity targets through an RPS increases the cost of emissions reduction by enforcing expensive non-fossil electricity in the mix. Additionally, it leads to leakage of emissions to non-electricity energy-intensive industries, as they may substitute electricity for coal or other cheaper fossil fuels.

Under a pure carbon pricing policy without an RPS, the model predicts a carbon price of \$23.38 per tonne of CO₂ (in 2011 US\$) to achieve the mean of India’s NDC target of

33–35% reduction in emissions intensity of the GDP in 2030 over 2005 level. This price is higher than the carbon prices currently observed in most developed nations (Jenkins & Karplus, 2016), suggesting it could be politically unacceptable. Enforcing an RPS to achieve India’s non-fossil targets brings down the price to US\$ 6.17 per tonne of CO₂, which is likely to gain traction. However, consumer welfare loss is higher when an RPS is combined with a carbon price, largely due to more expensive electricity. The implications of lower but concentrated carbon price and higher but dispersed welfare loss need to be considered while comparing the political feasibility of alternative policies.

The global and national decline in wind and solar costs motivates our inquiry into the interaction of above policy outcomes with varying costs of wind and solar power. As expected, welfare losses under the a carbon price plus RPS decrease sharply at lower wind and solar costs and are only slightly higher than those under a pure carbon price at the lowest cost levels that we simulate. This suggests that declining wind and solar costs may pave the way for more

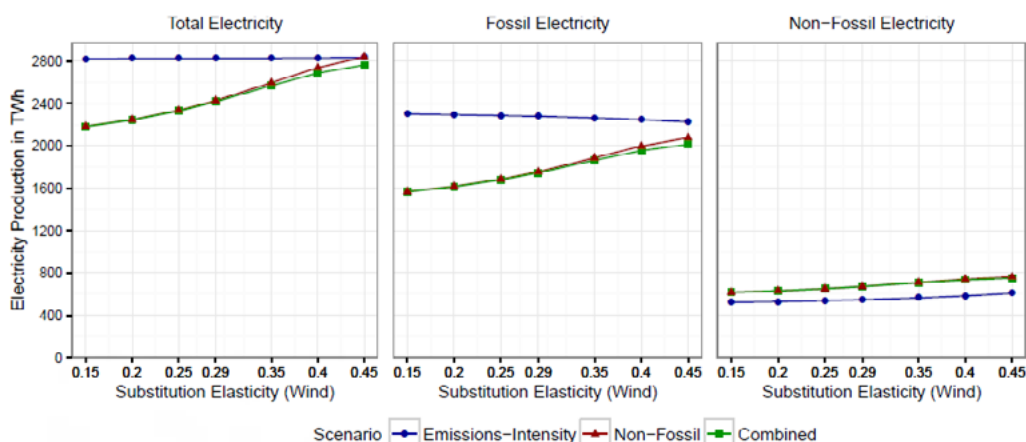


Figure 8: Variation in electricity production with varying costs of wind power expansion

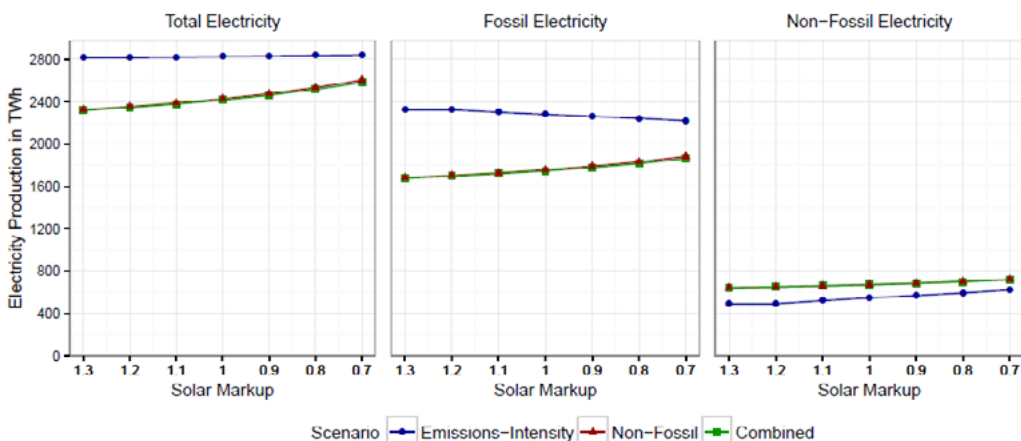


Figure 9: Variation in electricity production with varying cost of solar power

aggressive decarbonization policies in the future, without compromising India's economic development objectives.

Certain limitations of our work are noteworthy, and suggest directions for future research. First, the current version of the model solves statically in two states – 2011 and 2030. The model could be made recursive dynamic to study the pathways of policy impacts from the present to 2030, which would allow for a more careful resolution of path dependence in technology adoption and inter-period dynamics. This would also allow assessment of whether intermediate policy objectives (such as the renewable targets for 2022) would be achieved under proposed policies. Second, the electricity demand growth in the model is currently driven by GDP growth, and excludes the exogenous increase that will result from expanding electricity access. We intend to

simulate expansion of energy access in future work. Third, with one representative household, the model does not capture income and expenditure heterogeneity among households in India. Incorporating household heterogeneity in the model can provide valuable insights into the impact of climate policies across diverse income groups. This paper serves as a strong foundation for expanding our work in these directions.

Acknowledgements

This work was supported in part by a research fellowship provided to Arun Singh by the MIT Tata Center for Technology and Design which was established by a generous grant from the Tata Trusts. We thank the Energy Information Administration of the US Department of Energy for support to MIT through a cooperative agreement. We also thank the MIT Joint Program on the Science and Policy of Global Change for in-kind support.

5. References

- Aguiar, A., B. Narayanan & McDougall, R. (2016): An Overview of the GTAP 9 Data Base. *Journal of Global Economic Analysis*, 1(1): 181–208.
- Aldy, J. & R.N. Stavins (2012): The promise and problems of pricing carbon: theory and experience. *J. Environ. Dev.*, 21: 152.
- Armington, P.S. (1969): A Theory of Demand for Products Distinguished By Place of Production. *International Monetary Fund, Staff Papers*, 16(1): 159.
- Bertram, C., G. Luderer, R.C. Pietzcker, E. Schmid, E. Kriegler & O. Edenhofer (2015): Complementing carbon prices with technology policies to keep climate targets within reach. *Nature Climate Change*, 5(3): 235–239 (doi:10.1038/nclimate2514).
- Böhringer, C., N.J. Rivers, T.F. Rutherford & R. Wigle (2012): Green jobs and renewable electricity policies: Employment impacts of Ontario's feed-in tariff. *B.E. Journal of Economic Analysis and Policy*, 12(1).
- Brown, S.P.A. & M.K. Yücel (2008): What drives natural gas prices? *Energy Journal*, 29: 45. Available at: <http://mail1.dallasfed.org/research/papers/2007/wp0703.pdf>.
- Bull, N., K.A. Hassett & G.E. Metcalf (1994): Who pays broad-based energy taxes? Computing lifetime and regional incidence. *Energy Journal*, 15(3): 145–164.
- CEA (2015): *Growth of Electricity Sector in India From 1947–2015*. Available at: <https://www.researchgate.net/file.PostFileLoader.html?id=540615afd4c118e8508b4676&assetKey=AS%3A273591663300617%401442240745561>.
- Chen, Y.-H.H., S. Paltsev, J.M. Reilly, J.F. Morris & M.H. Babiker (2015): The MIT EPPA6 Model: Economic Growth, Energy Use, Emissions, and Food Consumptions. *Joint Program Report Series Report 278*, 40 p.
- Coase, R. (1960): The Problem of Social Cost. *Law and Economics*, 3(1): 1–44. Available at: <http://www.jstor.org/stable/724810>.
- Dirkse, S.P. & M.C. Ferris (1995): The path solver: a nonmonotone stabilization scheme for mixed complementarity problems. *Optimization Methods and Software*, 5(2): 123–156.
- Economic Times (2017): Coal cess is part of GST Compensation Fund: Piyush Goyal, Energy News, ET EnergyWorld. *Times of India*. Available at: <http://energy.economicstimes.indiatimes.com/news/coal/coal-cess-is-part-of-gst-compensation-fund-piyush-goyal/59684982> [Accessed September 11, 2017].
- Eisenhardt, K.M. (1989): Agency Theory: An Assessment and Review. *The Academy of Management Review*, 14(1): 57–74.
- Fisher-Vanden, K.A., P.R. Shukla, J.A. Edmonds, S.H. Kim & H.M. Pitcher (1997): Carbon Taxes and India. *Energy Economics*, 19: 289–325.
- GoI (2015): Press Statement: India's Intended Nationally Determined Contribution. October 2015, 8 p.
- Hassett, K., A. Mathur & G.E. Metcalf (2009): The Incidence of a U. S. Carbon Tax: A Lifetime and Regional Analysis (美國碳稅的發生率:壽命和區域分析). *Energy Journal*, 30(2): 157–180. Available at: <http://www.scopus.com/inward/record.url?eid=2-s2.0-65649153153&partnerID=40&md5=4f6f17aff485ef6ce36b29701bd81fcc>.
- IEA (2015): *India Energy Outlook - World Energy Outlook Special Report*. Available at: <https://www.iea.org/publications/freepublications/publication/india-energy-outlook-2015.html>.
- IISD (2012): *A Citizens' Guide To Energy Subsidies in India*. Available at: https://www.iisd.org/gsi/sites/default/files/ffs_india_czguide.pdf.
- IRENA (2016): *The Power To Change: Solar and Wind Cost Reduction Potential*, Abu Dhabi. Available at: http://www.irena.org/DocumentDownloads/Publications/IRENA_Power_to_Change_2016.pdf.
- Jenkins, J.D. (2014): Political economy constraints on carbon pricing policies: What are the implications for economic efficiency, environmental efficacy, and climate policy design? *Energy Policy*, 69: 467–477.
- Jenkins, J.D. & V.J. Karplus (2016): Carbon pricing under binding political constraints. *UNU-WIDER* (April): 47.
- Lipsey, R.G. & K. Lancaster (1956): The General Theory of Second Best. *The Review of Economic Studies*, 24(1): 11–32. Available at: <http://www.jstor.org.libproxy.mit.edu/stable/2296233>.
- LiveMint (2017): *Solar power tariff falls to record low of Rs3.15 a unit*. Available at: <http://www.livemint.com/Industry/VGSYBOu0z5NfyJuVE8xJ/Solar-power-tariff-falls-to-record-low-of-Rs315-a-unit.html>.
- Mathiesen, L. (1985): COMPUTATION OF ECONOMIC EQUILIBRIA BY A SEQUENCE OF LINEAR COMPLEMENTARITY PROBLEMS. *Mathematical Programming Study*, 23: 144–162.
- McFarland, J.R., J.M. Reilly & H.J. Herzog (2004): Representing energy technologies in top-down economic models using bottom-up information. *Energy Economics*, 26(4): 685–707.

- Metcalf, G.E. & D. Weisbach (2009): The Design of a Carbon Tax. *Harvard Environmental Law Review*, 33(2): 499–556. Available at: <http://www.heinonline.org/HOL/Page?handle=hein.journals/helr33&tid=503&collection=journals&index=journals/helr>.
- Morris, J.F., J.M. Reilly & Y.-H.H. Chen (2014): Advanced Technologies in Energy-Economy Models for Climate Change Assessment. *Joint Program Report Series Report 272*, 24 p. Available at: https://globalchange.mit.edu/sites/default/files/MITJPSPGC_Rpt272.pdf.
- Morris, J.F., J.M. Reilly & S. Paltsev (2010): Combining a Renewable Portfolio Standard with a Cap-and-Trade Policy: A General Equilibrium Analysis. *Joint Program Report Series Report 187*, 19 p. Available at: <https://globalchange.mit.edu/publication/13783>.
- Murphy, D.D. (2002): The Business Dynamics of Global Regulatory Competition. In R. Kagan & D. Vogel, eds. *Dynamics of Regulatory Change: How Globalization Affects National Regulatory Policies*. Berkeley: University of California Press.
- NITI Aayog (2015): Report of the expert group on 175 GW RE by 2022, National Institute for Transforming India. Available at: http://niti.gov.in/writereaddata/files/writereaddata/files/document_publication/report-175-GW-RE.pdf.
- OECD (2017): GDP Long-Term Forecast. Available at: <https://data.oecd.org/gdp/gdp-long-term-forecast.htm#indicator-chart>.
- Ojha, V.P. (2009): Carbon emissions reduction strategies and poverty alleviation in India. *Environment and Development Economics*, 14(3): 323–348 (doi:10.1017/S1355770X0800497X).
- Olson, M. (1984): *The Rise and Decline of Nations: Economic Growth, Stagflation, and Social Rigidities*, London: Yale University Press: New Haven, Connecticut.
- Peters, J.C. (2016): The GTAP-Power Data Base: Disaggregating the Electricity Sector in the GTAP Data Base. *Journal of Global Economic Analysis*, 1(1): 209–250.
- Poterba, J.M. (1991): Tax Policy To Combat Global Warming: On Designing a Carbon Tax. *NBER working paper series* (March).
- Rausch, S. & V.J. Karplus (2014): Markets versus regulation: The efficiency and distributional impacts of U.S. climate policy proposals. *Energy Journal*, 35(SPEC. ISSUE 1): 199–227.
- Rutherford, T. (2002): Lecture notes on constant elasticity functions. *University of Colorado*. Available at: <http://www.gamsworld.eu/mpsge/debreu/ces.pdf>.
- Rutherford, T.F. (1998): Economic Equilibrium Modeling with GAMS: an Introduction to GAMS/MCP and GAMS/MPSE. , (June). Available at: <http://www.gams.com/dd/docs/tools/mpsge.pdf>.
- Rutherford, T.F. (1995): Extension of GAMS for complementarity problems arising in applied economic analysis. *Journal of Economic Dynamics and Control*, 19(8): 1299–1324.
- Shukla, P.R., S. Dhar & D. Mahapatra (2008): Low-carbon society scenarios for India. *Climate Policy*, 8:sup1(June) (doi:10.3763/cpol.2007.0498).
- Stavins, R.N. (2008): Addressing climate change with a comprehensive US cap-and-trade system. *Oxford Review of Economic Policy*, 24(2): 298–321.
- Stigler, G.J. (1971): The Theory of Economic Regulation. *The Bell Journal of Economics and Management Science*, 2(1): 3–21.
- Tongia, R. (2016): *India's Updated (2016) Renewable Energy "Guidelines": Bold targets, but can we meet them?* Available at: https://www.brookings.edu/wp-content/uploads/2016/09/201608_rposforindia_rt-2-11.pdf.
- U.S. EIA (2017): *Annual Energy Outlook 2017*. Available at: [http://www.eia.gov/outlooks/aeo/pdf/0383\(2017\).pdf](http://www.eia.gov/outlooks/aeo/pdf/0383(2017).pdf).
- Weitzman, M.L. (1974): Prices vs. Quantities. *Review of Economic Studies*, 41(January): 477–491. Available at: <http://ideas.repec.org/a/bla/restud/v41y1974i4p477-91.html>.
- World Bank (2014): CO₂ emissions (kg per 2011 PPP \$ of GDP) | Data. Available at: <https://data.worldbank.org/indicator/EN.ATM.CO2E.PP.GD.KD?locations=IN> [Accessed September 20, 2017].
- World Bank (2015): *GDP growth (annual %)*. Available at: <http://data.worldbank.org/indicator/NY.GDP.MKTP.KD.ZG?locations=IN>.
- World Bank (2017): *India - Country snapshot*. Washington, DC. Available at: <http://documents.worldbank.org/curated/en/488791507885476136/India-Country-snapshot>.
- World Bank (2016): *South Asia Economic Focus: Investment Reality Check*. Available at: <https://openknowledge.worldbank.org/handle/10986/25096>.

Appendix A: Important elasticity values used in the model

Elasticity	Description	Value
σ_{kle}	Elasticity of substitution between Energy and VA nests	0.40
σ_{ele_ne}	Elasticity of substitution between electricity and non-electricity inputs	0.50
σ_{ne}	Elasticity of substitution within non electricity inputs (col, oil, gas)	1.00
σ_{rkl}	Elasticity of substitution between res and capital-labor in agriculture	0.20
σ_{lem}	Elasticity of substitution between land and energy-materials in agriculture	0.30
$\sigma_{etsfndi}$	Elasticity of substitution between the TSF and other inputs	0.29
σ_{top_bt}	Elasticity of substitution between TSF and other inputs for backstop technology	0.29
$\sigma_{sub}(c)$	Top level elasticity in final demand	0.25
σ_{ene_fd}	Elasticity of substitution between energy sources in final demand	0.40
σ_{ec_fd}	Elasticity of substitution between energy and other consumption in final demand	0.25

Appendix B: Bottom up estimation of cost shares for solar power (NITI Aayog, 2015)

Parameter	Unit	Value
Capex (2015–16)	INR million/MW	60
O&M – 1 st year (P)	INR million/MW/Year	1.23
Project Life (n)	Years	25
O&M Escalation (g)	%	5.72
Discount Rate (r)	%	11
PV of O&M	INR million/MW	16.41
PV of total costs (Capex + PV of O&M)	INR million/MW	76.41
Capex as % of PV of costs	%	78.5
O&M as % of PV of costs	%	21.5
TSF input to backstop	%	2.2
Non TSF inputs to backstop	%	97.8
Capital input	%	76.8
Labor input	%	21.0

Appendix C: Calculation of Emissions Intensity Target

Parameter	Unit	Value
Benchmark Emissions	Million MT CO ₂	1771.2
Benchmark GDP	Billion USD (2011)	2034.6
Benchmark Emissions Intensity of GDP	MT CO ₂ /Thousand USD (2011)	0.8705
Base Year	Year	2005
Benchmark Year	Year	2011
Target Year	Year	2030
Total required decrease in Emissions Intensity ¹	%	34
Percentage decline in Emissions Intensity between 2005 and 2011 ²	%	5.06
Required decline in Emissions Intensity between 2011 and 2030	%	28.94
Emissions intensity in 2030 as percentage of that in 2011	%	71.06
Target emissions intensity in 2030	MT CO ₂ /Thousand USD (2011)	0.62

¹ India's NDC in GoI (2015) mention a reduction in emissions intensity of the GDP by 33–35% by 2030 over 2005 levels. We take the mean value of 34% for our analysis.

² Obtained from CO₂ emissions intensity data reported in World Bank (2014).

Appendix D: Conversion of non-fossil electricity capacity targets for 2030 to production targets

Parameter	Fossil	Non-Fossil	Total
Installed Capacity in 2015 (GW)	188.898	82.824	271.722
Electricity Production in 2015 (GWh)	878320	227126	1105446
Capacity Factor (2015)	0.53	0.31	0.46
Assumed Capacity Factor (2030)	0.53	0.31	0.44
Installed Capacity Target for 2030	60%	40%	100%
Production Target for 2030	72%	28%	100%

Joint Program Report Series - Recent Articles

For limited quantities, Joint Program Reports are available free of charge. Contact the Joint Program Office to order.

Complete list: <http://globalchange.mit.edu/publications>

327. **Evaluating India's climate targets: the implications of economy-wide and sector specific policies.** *Singh et al., Mar 2018*
326. **MIT Climate Resilience Planning: Flood Vulnerability Study.** *Strzepek et al., Mar 2018*
325. **Description and Evaluation of the MIT Earth System Model (MESM).** *Sokolov et al., Feb 2018*
324. **Finding Itself in the Post-Paris World: Russia in the New Global Energy Landscape.** *Makarov et al., Dec 2017*
323. **The Economic Projection and Policy Analysis Model for Taiwan: A Global Computable General Equilibrium Analysis.** *Chai et al., Nov 2017*
322. **Mid-Western U.S. Heavy Summer-Precipitation in Regional and Global Climate Models: The Impact on Model Skill and Consensus Through an Analogue Lens.** *Gao and Schlosser, Oct 2017*
321. **New data for representing irrigated agriculture in economy-wide models.** *Ledvina et al., Oct 2017*
320. **Probabilistic projections of the future climate for the world and the continental USA.** *Sokolov et al., Sep 2017*
319. **Estimating the potential of U.S. urban infrastructure albedo enhancement as climate mitigation in the face of climate variability.** *Xu et al., Sep 2017*
318. **A Win-Win Solution to Abate Aviation CO₂ emissions.** *Winchester, Aug 2017*
317. **Application of the Analogue Method to Modeling Heat Waves: A Case Study With Power Transformers.** *Gao et al., Aug 2017*
316. **The Revenue Implications of a Carbon Tax.** *Yuan et al., Jul 2017*
315. **The Future Water Risks Under Global Change in Southern and Eastern Asia: Implications of Mitigation.** *Gao et al., Jul 2017*
314. **Modeling the Income Dependence of Household Energy Consumption and its Implications for Climate Policy in China.** *Caron et al., Jul 2017*
313. **Global economic growth and agricultural land conversion under uncertain productivity improvements in agriculture.** *Lanz et al., Jun 2017*
312. **Can Tariffs be Used to Enforce Paris Climate Commitments?** *Winchester, Jun 2017*
311. **A Review of and Perspectives on Global Change Modeling for Northern Eurasia.** *Monier et al., May 2017*
310. **The Future of Coal in China.** *Zhang et al., Apr 2017*
309. **Climate Stabilization at 2°C and Net Zero Carbon Emissions.** *Sokolov et al., Mar 2017*
308. **Transparency in the Paris Agreement.** *Jacoby et al., Feb 2017*
307. **Economic Projection with Non-homothetic Preferences: The Performance and Application of a CDE Demand System.** *Chen, Dec 2016*
306. **A Drought Indicator based on Ecosystem Responses to Water Availability: The Normalized Ecosystem Drought Index.** *Chang et al., Nov 2016*
305. **Is Current Irrigation Sustainable in the United States? An Integrated Assessment of Climate Change Impact on Water Resources and Irrigated Crop Yields.** *Blanc et al., Nov 2016*
304. **The Impact of Oil Prices on Bioenergy, Emissions and Land Use.** *Winchester & Ledvina, Oct 2016*
303. **Scaling Compliance with Coverage? Firm-level Performance in China's Industrial Energy Conservation Program.** *Karplus et al., Oct 2016*
302. **21st Century Changes in U.S. Heavy Precipitation Frequency Based on Resolved Atmospheric Patterns.** *Gao et al., Oct 2016*
301. **Combining Price and Quantity Controls under Partitioned Environmental Regulation.** *Abrell & Rausch, Jul 2016*
300. **The Impact of Water Scarcity on Food, Bioenergy and Deforestation.** *Winchester et al., Jul 2016*
299. **The Impact of Coordinated Policies on Air Pollution Emissions from Road Transportation in China.** *Kishimoto et al., Jun 2016*
298. **Modeling Regional Carbon Dioxide Flux over California using the WRF-ACASA Coupled Model.** *Xu et al., Jun 2016*
297. **Electricity Investments under Technology Cost Uncertainty and Stochastic Technological Learning.** *Morris et al., May 2016*
296. **Statistical Emulators of Maize, Rice, Soybean and Wheat Yields from Global Gridded Crop Models.** *Blanc, May 2016*
295. **Are Land-use Emissions Scalable with Increasing Corn Ethanol Mandates in the United States?** *Ejaz et al., Apr 2016*
294. **The Future of Natural Gas in China: Effects of Pricing Reform and Climate Policy.** *Zhang & Paltsev, Mar 2016*
293. **Uncertainty in Future Agro-Climatic Projections in the United States and Benefits of Greenhouse Gas Mitigation.** *Monier et al., Mar 2016*
292. **Costs of Climate Mitigation Policies.** *Chen et al., Mar 2016*
291. **Scenarios of Global Change: Integrated Assessment of Climate Impacts.** *Paltsev et al., Feb 2016*